

MiniModule Mounting Systems

Overview

MiniModules are stand-alone self-contained processing blocks that can be used in temporary "throw down" applications. We have a variety of practical mechanical mounting options, which enables the MiniModules to be physically secured in place. This is better for safety, organization and system integration for more permanent

long-term installations. These solutions range from small brackets for securing single modules, through to a 19-inch rack mount system that can secure up to 10 MiniModules in the rear of equipment racks. Regardless of the intended use or application we have a mounting solution which will suit your needs.

R FR 3005

Mounting Bracket for 10 MiniModules

Description

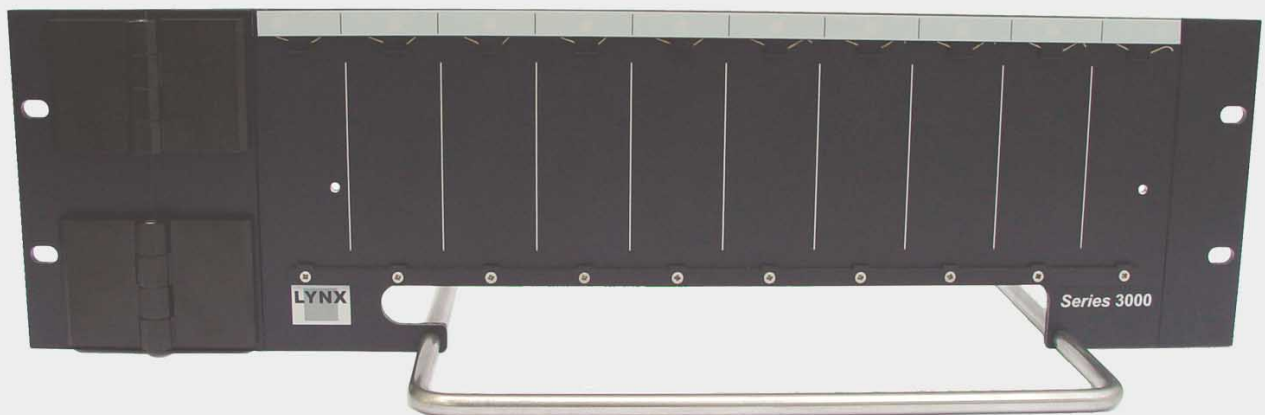
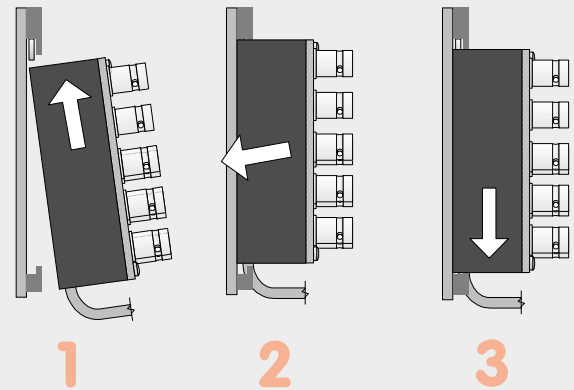
The R FR 3005 is a 19-inch rack mounting system that can physically secure up to 10 Series 3000 MiniModules. The small 3 RU vertical profile and the hinge mechanism makes it ideal for mounting in the rear of equipment racks where there is normally plenty of room to accommodate extra equipment. The hinged plate facilitates the access to other equipment already installed in the rack. Other features include a cable support bar for securing cable looms to and from the modules and rear

support bars that can be used to secure AC power strips (not supplied). Module installation is simple and secure and requires no tools. Modules still require their individual power supplies, and extension leads are available (R PS 15 and R PS 25) to facilitate the remote location of the supplies. The R FR 3005 is primarily designed for combination with the R FR 3010 Central Power Chassis to form a complete self-contained 19-inch rack system, which provides central and redundant power plus remote control and status monitoring capability.

Key Features

- Secure up to 10 Series 3000 MiniModules
- Robust steel design with heavy duty hinges
- Rear Rack mounting, low profile (3RU)
- Cable support bars in front and rear
- Provides hinged access to installed equipment
- Simple module installation, no tools required
- Integral tag strip for Module identification
- Can be combined with the R FR 3010 for central power and remote control capability

Module Installation



MiniModule Mounting Systems

R FR 3004

Mounting Bracket for 4 MiniModules

Description

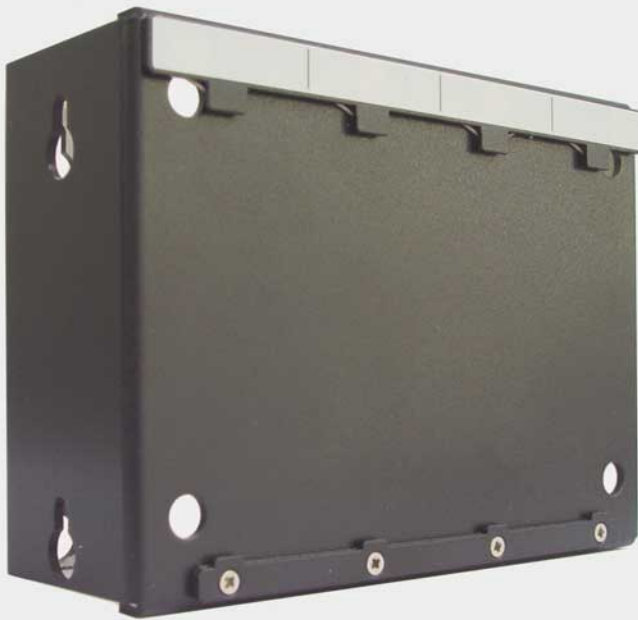
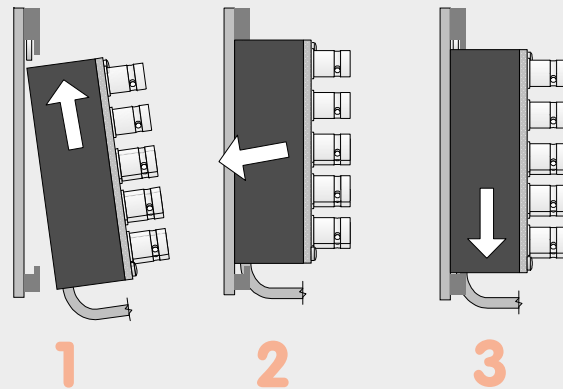
The R FR 3004 is a small bracket used to physically secure up to 4 Series 3000 MiniModules. The unit can be mounted anywhere and securing holes are provided in the back and the front of the assembly for mounting. Modules still require their

individual power supplies, and extension leads are available (R PS 15 and R PS 25) to facilitate the remote location of the supplies. Module installation is simple and requires no tools. Unit includes an integral tag strip for module identification.

Key Features

- Secure up to 4 Series 3000 MiniModules
- Front or side mount on any surface
- Integral tag strip for Module identification
- Simple Module installation - requires no tools.

Module Installation



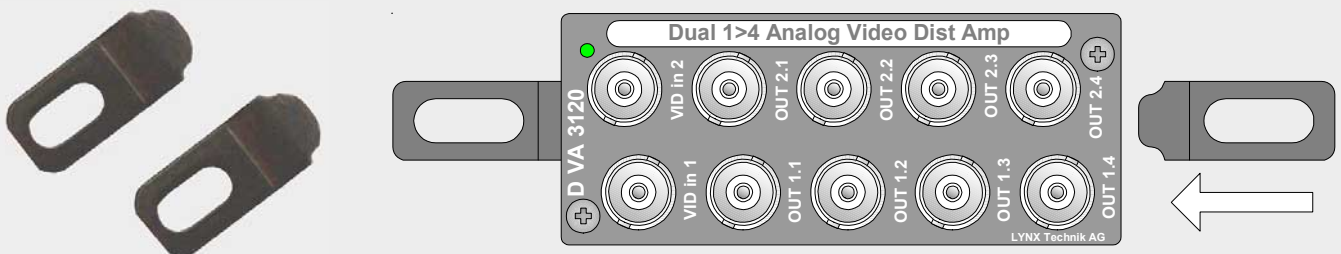
R FR 3000

Individual Mounting Supports

Description

The R FR 3000 Mounting supports is a set of two brackets used to secure individual MiniModules to the wall, floor or any suitable mounting surface. The brackets fit into slots provided in

the top and bottom of the MiniModule. Supplied in sets of five (10 brackets)



Version 1.2 © 2003 LYNX Technik AG. All Rights Reserved. Specifications subject to change without prior notice

Head Quarters: **LYNX Technik AG**

Brunnenweg 3
D-64331 Weiterstadt
Germany

Phone +49 (0) 6150 1817 0
Fax +49 (0) 6150 1817 10

web : www.lynx-technik.com
e-mail: info@lynx-technik.com

Americas: **LYNX Technik Inc.**

PO Box 1067
Santa Clarita CA, 91386-1067
USA

Phone (661) 251 8600
Fax (661) 251 8088

web : www.lynx-usa.com
e-mail: infousa@lynx-technik.com