

fiber options

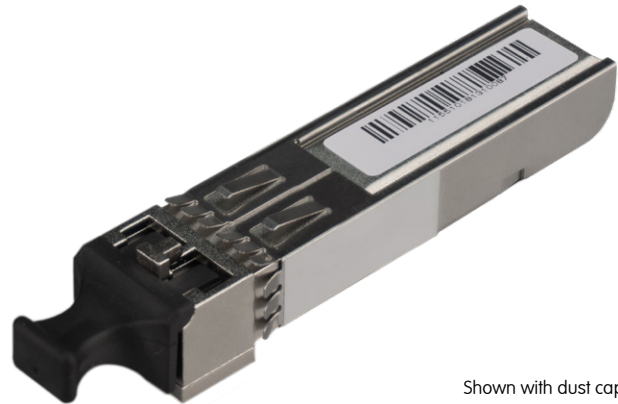
OH-TT-1-Y-LC Fiber SFP Data Sheet

Dual Channel 3Gbit SDI Optical Transmitter

- Dual Channel SDI multi-rate optical transmitter for 3G-SDI, HD-SDI and SD-SDI signals
- Support for SMPTE 424M, SMPTE 292M, SMPTE 259M, DVB-ASI
- 1310nm wavelength (each channel, non CWDM).
- Distances up to 10km** (singlemode)
- For use with yellobrik and Series 5000 product lines
- Pluggable and hot swappable
- LC Duplex Connector, singlemode
- Lead free and RoHS compliant

The OH-TT-1-Y-LC Dual channel SDI optical transmitter is an integrated part or plug in option for select LYNX Technik yellobrik and Series 5000 products. This SFP module facilitates the conversion of two electrical SDI signals into optical signals for transmission over two fiber links. Wavelength is a fixed 1310nm for each channel and suitable for distances up to 10km**. The module accommodates 270Mbit / 1.485Gbit and 2.97Gbit SDI signals conforming to SMPTE 424M, 292M, 259M and DVB-ASI.

A socket, or "cage" is provided for the SFP in the supporting LYNX product for easy installation or upgrade. The SFP is hot swappable.



Shown with dust cap fitted

Specifications (for each channel)

Parameter		Min	Typ	Max
Intrinsic Jitter (ps)	2.97 Gb/s	-	45	80
	1.485 Gbit/s	-	45	80
	270 Mbit/s	-	45	80
Wavelength		1290nm	1310nm	1330nm
Optical Power		-8dBm	-5dBm	-3dBm
Distance		-	10km**	-
Linear Extinction Ratio		5.0	9.0	-
Operating Temperature Range		5°C	-	40°C
Power Supply Voltage		3.1 VDC	3.3 VDC	3.5VDC
Power Consumption		-	260 mA	330 mA
Humidity (non condensing)		-	-	90%

** 10km distance is an approximation. Actual distances achieved can be longer or shorter depending on the type of fiber cable and accumulated optical losses in the fiber link. Determine link losses and perform optical budget calculations to ensure correct operation.

Country of manufacture: Taiwan

Mechanical

Parameter	
Size (not including connector - typ)	57mm x 13.4mm x 12.4mm
Weight	50g
SFP Connector pinning	Proprietary
Fiber connections	LC / Duplex - singlemode

Ordering Information

EAN / UPC	Model	Description
4250479320642	OH-TT-1-Y-LC	Dual Channel 3G SDI Fiber Transmitter

WARNING

This SFP module is a Class 1 laser device which complies to IEC825 and FDA 21 CFR 1040.10 and 1040.11. The device must be operated within specified temperature and voltage limits. The optical ports of the module must always be terminated with an optical connector or a dust plug (dust plug supplied)



Rev 1.2 Specifications subject to change

LYNXTechnik AG

www.lynx-technik.com

LYNX Technik AG
Brunnenweg 3
D-64331 Weiterstadt
Germany
PH +49 (0) 6150 1817 0
info@lynx-technik.com

LYNX Technik Inc
26366 Ruether Ave.
Santa Clarita, CA 91350
USA
PH +1 (661) 251 8600
infousa@lynx-technik.com

LYNX Technik Pte Ltd
19 Burn Road
#01-01 Advance Building
Singapore, 369974
PH +65 648 1622
infoasia@lynx-technik.com