

fiber options

OH-TX-8-XXXX-Y-LC Fiber SFP Data Sheet

3Gbit SDI Optical Transmitter - CWDM (high power)

- SDI multi-rate optical transmitter for 3G-SDI, HD-SDI and SD-SDI signals
- Support for SMPTE 424M, SMPTE 292M, SMPTE 259M, DVB-ASI
- 18 wavelength selections according to ITU-T G694.2
- High power for distances up to 80km** (singlemode)
- For use with yellobrik and Series 5000 product lines
- Pluggable and hot swappable
- LC Simplex connector - singlemode
- Lead free and RoHS compliant

The OH-TX-8-XXXX -Y-LC SDI optical transmitter is a CWDM fiber plug in option for select LYNX Technik yellobrik and Series 5000 products. This SFP module facilitates the conversion of an electrical SDI signal into an optical signal for transmission over fiber. 18 wavelength selections are available for CWDM applications and support for distances of up to 80km** is provided. The module supports 270Mbit / 1.485Gbit and 2.97Gbit SDI signals conforming to SMPTE 424M, 292M, 259M and DVB-ASI. This is a higher power device intended for long haul applications.

A socket, or "cage" is provided for the SFP in the supporting LYNX product for easy installation or upgrade. The SFP is hot swappable.

Specifications

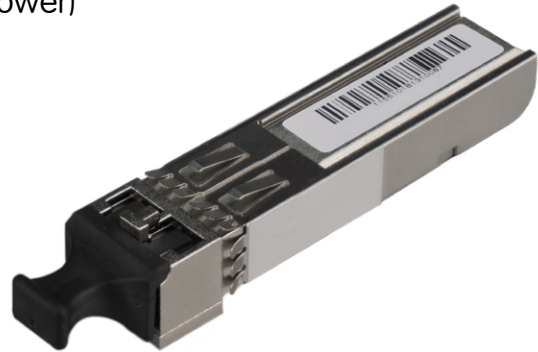
Parameter		Min	Typ	Max
Intrinsic Jitter (ps)	2.97 Gb/s	-	45	80
	1.485 Gbit/s	-	45	80
	270 Mbit/s	-	45	80
Wavelengths [8 according to ITU-T G694.2]		$\lambda - 10\text{nm}$	λ	$\lambda + 10\text{nm}$
Optical Power		+1dBm	+3dBm	+5dBm
Distance		-	80km**	-
Linear Extinction Ratio		5.0	8.0	-
Operating Temperature Range		5°C	-	40°C
Power Supply Voltage		3.1 VDC	3.3 VDC	3.5VDC
Power Consumption		-	130 mA	200 mA
Humidity (non condensing)		-	-	90%

$\lambda = 1270/1290/1310/1330/1350/1370/1390/1410/1430/1450/1470/1490/1510/1530/1550/1570/1590/1610\text{nm}$

Mechanical

Parameter	
Size (not including connector - typ)	57mm x 13.4mm x 12.4mm
Weight	50g
SFP Connector pinning	MSA
Fiber connections	LC / Simplex - singlemode

Country of manufacture: Taiwan



Shown with dust cap fitted

Ordering Information

EAN / UPC	Model	Description
4250479320468	OH-TX-8-1270 -Y-LC	3G SDI Fiber Transmitter CWDM - 1270nm
4250479320475	OH-TX-8-1290 -Y-LC	3G SDI Fiber Transmitter CWDM - 1290nm
4250479320482	OH-TX-8-1310 -Y-LC	3G SDI Fiber Transmitter CWDM - 1310nm
4250479320499	OH-TX-8-1330 -Y-LC	3G SDI Fiber Transmitter CWDM - 1330nm
4250479320505	OH-TX-8-1350 -Y-LC	3G SDI Fiber Transmitter CWDM - 1350nm
4250479320512	OH-TX-8-1370 -Y-LC	3G SDI Fiber Transmitter CWDM - 1370nm
4250479320529	OH-TX-8-1390 -Y-LC	3G SDI Fiber Transmitter CWDM - 1390nm
4250479320536	OH-TX-8-1410 -Y-LC	3G SDI Fiber Transmitter CWDM - 1410nm
4250479320543	OH-TX-8-1430 -Y-LC	3G SDI Fiber Transmitter CWDM - 1430nm
4250479320550	OH-TX-8-1450 -Y-LC	3G SDI Fiber Transmitter CWDM - 1450nm
4250479320567	OH-TX-8-1470 -Y-LC	3G SDI Fiber Transmitter CWDM - 1470nm
4250479320574	OH-TX-8-1490 -Y-LC	3G SDI Fiber Transmitter CWDM - 1490nm
4250479320581	OH-TX-8-1510 -Y-LC	3G SDI Fiber Transmitter CWDM - 1510nm
4250479320598	OH-TX-8-1530 -Y-LC	3G SDI Fiber Transmitter CWDM - 1530nm
4250479320604	OH-TX-8-1550 -Y-LC	3G SDI Fiber Transmitter CWDM - 1550nm
4250479320611	OH-TX-8-1570 -Y-LC	3G SDI Fiber Transmitter CWDM - 1570nm
4250479320628	OH-TX-8-1590 -Y-LC	3G SDI Fiber Transmitter CWDM - 1590nm
4250479320635	OH-TX-8-1610 -Y-LC	3G SDI Fiber Transmitter CWDM - 1610nm

** Distance is an approximation. Actual distances achieved can be longer or shorter depending on the type of fiber cable and accumulated optical losses in the fiber link. Determine link losses and perform optical budget calculations to ensure correct operation.

WARNING

These SFP modules are Class 1 laser devices which comply to IEC825 and FDA 21 CFR 1040.10 and 1040.11. The device must be operated within specified temperature and voltage limits. The optical ports of the module must always be terminated with an optical connector or a dust plug (dust plug supplied)



Rev 1.2 Specifications subject to change

LYNXTechnik AG

www.lynx-technik.com

LYNX Technik AG
Brunnenweg 3
D-64331 Weiterstadt
Germany
PH +49 (0) 6150 1817 0
info@lynx-technik.com

LYNX Technik Inc
26366 Ruefher Ave.
Santa Clarita, CA 91350
USA
PH +1 (661) 251 8600
info@lynx-usa.com

LYNX Technik Pte Ltd
19 Burn Road
#01-01 Advance Building
Singapore, 369974
PH +65 648 1622
infoasia@lynx-technik.com