

Reference Manual

P MX 5364

SD / HD Multi-format 8 Channel Analog Audio Embedder

**Revision: 1.0
November 2008**



Information in this document is subject to change without notice. No part of this document may be reproduced or transmitted in any form or by any means, electronic or mechanical for any purpose, without express written permission of LYNX Technik AG.

LYNX Technik AG may have patents, patent applications, trademarks, copyrights or other intellectual property rights covering the subject matter in this document. Except as expressly written by LYNX Technik AG, the furnishing of this document does not give you any license to patents, trademarks, copyrights or other intellectual property of LYNX Technik AG or any of its affiliates.

**LYNX Technik AG
Brunnenweg 3
D 64331 Weiterstadt
Germany
www.lynx-technik.com**

Contents

REGULATORY INFORMATION	5
EUROPE.....	5
<i>Declaration of Conformity</i>	5
USA.....	5
<i>FCC 47 Part 15</i>	5
GETTING STARTED	6
PACKAGING.....	6
ESD WARNING.....	6
PREVENTING ESD DAMAGE.....	6
PRODUCT DESCRIPTION	7
KEY FEATURES.....	7
INPUT FORMATS.....	7
OUTPUT FORMATS.....	8
AUDIO SYNC FRAME WITH NO INPUT.....	8
ANALOG AUDIO INPUTS.....	8
INTERNAL AUDIO DEEMBEDDING.....	8
AUDIO CROSSBAR.....	8
AUDIO PROCESSING.....	9
AUDIO GROUP DELETION.....	9
FUNCTIONAL DIAGRAM (P MX 5364)	9
MODULE LAYOUT	10
CONNECTIONS	11
VIDEO.....	11
AUDIO.....	11
INSTALLATION	12
SETTINGS AND CONTROL	13
MULTI FUNCTION SWITCH.....	13
USING THE LOCAL DISPLAY MENUS.....	13
MENU STRUCTURE.....	14
LED STATUS INDICATORS	17
AES STATUS LED 1.....	17
SDI STATUS LED 2.....	17
ALARM LED 3.....	17
CONTROL SYSTEM GUI	18
MAIN TAB.....	19
<i>Input Detection</i>	19
<i>Group Status</i>	19
<i>Test Pattern Signal Standard</i>	19
<i>Audio AD Conversion</i>	20
<i>Audio Crossbar</i>	20
<i>Embedder</i>	20
AUDIO PROCESSING TAB (AUDIO PROC).....	21
EVENTS TAB.....	22
<i>Log in GUI Function</i>	22
<i>Event Enabled</i>	22

<i>SNMP Support</i>	22
COMMON GUI CONTROLS	23
<i>Properties</i>	23
<i>Locate</i>	23
<i>New Control Window</i>	23
<i>Rename</i>	24
<i>Release</i>	24
<i>Lock</i>	24
<i>Reset Factory Defaults</i>	24
SPECIFICATIONS	25
SERVICE	26
PARTS LIST	26
TECHNICAL SUPPORT	26
CONTACT INFORMATION	26

Warranty

LYNX Technik AG warrants that the product will be free from defects in materials and workmanship for a period of two (2) years from the date of shipment. If this product proves defective during the warranty period, LYNX Technik AG at its option will either repair the defective product without charge for parts and labor, or will provide a replacement in exchange for the defective product.

In order to obtain service under this warranty, customer must notify LYNX Technik of the defect before expiration of the warranty period and make suitable arrangements for the performance of service. Customer shall be responsible for packaging and shipping the defective product to the service center designated by LYNX Technik, with shipping charges prepaid. LYNX Technik shall pay for the return of the product to the customer if the shipment is within the country which the LYNX Technik service center is located. Customer shall be responsible for payment of all shipping charges, duties, taxes and any other charges for products returned to any other locations.


This warranty shall not apply to any defect, failure, or damage caused by improper use or improper or inadequate maintenance and care. LYNX Technik shall not be obligated to furnish service under this warranty a) to repair damage resulting from attempts by personnel other than LYNX Technik representatives to install, repair or service the product; b) to repair damage resulting from improper use or connection to incompatible equipment; c) to repair any damage or malfunction caused by the use of non LYNX Technik supplies; or d) to service a product which has been modified or integrated with other products when the effect of such modification or integration increases the time or difficulty servicing the product.

THIS WARRANTY IS GIVEN BY LYNX TECHNIK WITH RESPECT TO THIS PRODUCT IN LIEU OF ANY OTHER WARRANTIES, EXPRESS OR IMPLIED. LYNX TECHNIK AND ITS VENDORS DISCLAIM ANY IMPLIED WARRANTIES OF MERCHANTABILITY OR FITNESS FOR A PARTICULAR PURPOSE. LYNX TECHNIK'S RESPONSIBILITY TO REPAIR AND REPLACE DEFECTIVE PRODUCTS IS THE SOLE AND EXCLUSIVE REMEDY PROVIDED TO THE CUSTOMER FOR BREACH OF THIS WARRANTY. LYNX TECHNIK AND ITS VENDORS WILL NOT BE LIABLE FOR ANY INDIRECT, SPECIAL, INCIDENTAL, OR CONSEQUENTIAL DAMAGES IRRESPECTIVE OF WHETHER LYNX TECHNIK OR THE VENDOR HAS ADVANCE NOTICE OF THE POSSIBILITY OF SUCH DAMAGES.

Regulatory information

Europe

Declaration of Conformity

<p>We</p>	<p>LYNX Technik AG Brunnenweg 3 D-64331 Weiterstadt Germany</p>
<p><i>Declare under our sole responsibility that the product</i></p>	
<p>TYPE: P MX 5364</p>	
<p><i>To which this declaration relates is in conformity with the following standards (environments E1-E3):</i></p>	
<p>EN 55103-1 /1996 EN 55103-2 /1996 EN 60950 /2001</p>	
<p><i>Following the provisions of 89/336/EEC and 73/23/EEC directives.</i></p>	
<p>Winfried Deckelmann</p>	
<p>Weiterstadt, November 2008</p>	
<p><i>Place and date of issue</i></p>	<p><i>Legal Signature</i></p>

USA

FCC 47 Part 15

This device complies with part 15 of the FCC Rules. Operation is subject to the following two conditions: (1) This device may not cause harmful interference, and (2) this device must accept any interference received, including interference that may cause undesired operation.

Note: This equipment has been tested and found to comply with the limits for a Class A digital device, pursuant to the part 15 of the FCC Rules. These limits are designed to provide reasonable protection against harmful interference when the equipment is operated in a commercial environment. This equipment generates, uses, and can radiate radio frequency energy and, if not installed and used in accordance with the instruction manual, may cause harmful interference to radio communications. Operation of this equipment in a residential area is likely to cause harmful interference in which case the user will be required to correct the interference at his own expense

Getting Started

Most CardModules are installed into the rack frames and system tested in the factory. If this is an upgrade part or service exchange item then the module is supplied in a padded cardboard carton which includes the CardModule, rear connection plate and mounting screws.

Packaging

The shipping carton and packaging materials provide protection for the module during transit. Please retain the shipping cartons in case subsequent shipping of the product becomes necessary. Do not remove the module from its protective static bag unless observing adequate ESD precautions. Please see below.

ESD Warning



This product is static sensitive. Please use caution and use preventative measures to prevent static discharge or damage could result to module.

Preventing ESD Damage

Electrostatic discharge (ESD) damage occurs when electronic assemblies or the components are improperly handled and can result in complete or intermittent failure.

Do not handle the module unless using an ESD-preventative wrist strap and ensure that it makes good skin contact. Connect the strap to any solid grounding source such as any exposed metal on the rack chassis or any other unpainted metal surface.

Caution

Periodically check the resistance value of the antistatic strap. The measurement should be between 1 and 10 Megohms.

Product Description

The P MX 5364 is a high quality multi-format 8 channel analog audio embedder suitable for use in SDTV applications and new HDTV applications, with support for a variety of HDTV formats.

The module is multi-format and multimode in operation. The input video standard (and format) is detected and the module automatically switches its operation to the detected format. Audio which is already embedded in the SDI input stream can be deembedded internally and can be routed to the embedder together with the 8 audio input channels in a mono crossbar, all audio can be processed including mono gain, phase invert, mute and overload and silence detection.

The module also provides 4 x SDI outputs so it can also fill the role of a multi-format 1 > 4 re-clocking distribution amplifier.

Key Features

- Support for SDTV and HDTV standards
- Automatic video standard and format detection
- Internal deembedding of existing embedded audio
- Delete or replace existing embedded audio
- Monaural audio crossbar
- Internal audio processing
- Selectable Full Scale Levels for analog audio inputs
- Embedded audio group selection
- Black output audio sync frame with no SDI input signal
- 4 x SDI outputs

Input Formats

The module has one multi-format serial digital input with automatic input detection. The module will detect the following input standards and configure the module automatically for operation in the connected format:

SDTV Formats	HDTV Formats
525 / 59.94Hz	1080i / 59.94Hz
625 / 50Hz	1080i / 60Hz
	1080i / 50Hz
	720P / 59.94Hz
	720P / 60Hz
	720P / 50Hz
	720P / 23.98Hz
	720P / 24Hz
	720P / 25Hz
	720P / 29.97Hz
	720P / 30Hz
	1080P / 23.98Hz
	1080P / 24Hz
	1080P / 25Hz
	1080P / 29.97Hz
	1080P / 30Hz
	1080PSF / 23.98Hz
	1080PSF / 24Hz
	1080PSF / 25Hz

Output Formats

Same as the input format or the pre-selected format if no input is connected (see below)

Audio Sync Frame with No Input

With no SDI signal connected the module will (default) to the last connected video standard and will produce a black video output with the audio embedded. For applications where downstream equipment needs to detect signal loss, the output can also be switched if with no SDI signal connected.

If used in standalone mode with no SDI input connected the output standard can be changed from the default using the format selections provided in the GUI or local menus.

Note. The modules are supplied with set with “*default to the last connected video standard*”. This will be 1080i / 50Hz for new modules. This can be cleared by connecting a different video input, or by selecting the required video format (using the selections provided) – waiting approx 10 seconds for the module LEDs to flash yellow three times and then switching it back to “*follow last input*”. This will have the same effect.

If the SDI video input is removed during operation, then the embedder will continue to embed audio into a black video frame in the selected format until the video is restored.

Note. *Settings will be written to flash RAM automatically after 10 seconds with no activity. This can be observed by the alarm LED flashing yellow three times. If power is removed before the settings have been stored the module will revert back to the previous settings when powered up*

Analog Audio Inputs

The 8 analog audio input channels are converted with 24Bit accuracy. The Full Scale level of all channels can be set to 12dBu, 15dBu, 18dBu, 22dBu or 24 dBu.

Internal Audio deembedding

Already embedded audio in the SDI input stream will be deembedded (all 4 groups = 8 x AES) and fed via the internal audio processing into the monaural audio crossbar.

To maintain the phase relationship of all deembedded audio channels a phase aligned deembedding process can be activated.

Audio Crossbar

Each internal audio signal (coming from the analog inputs or the internal deembedders) is fed through the audio processing into a monaural audio crossbar where individual left and right audio channels can be re-assigned / swapped prior to embedding.

Note. The mono switching function is only accessible using the Module GUI via the control system. The local menu system and display only allows for switching of AES signals (stereo pairs)

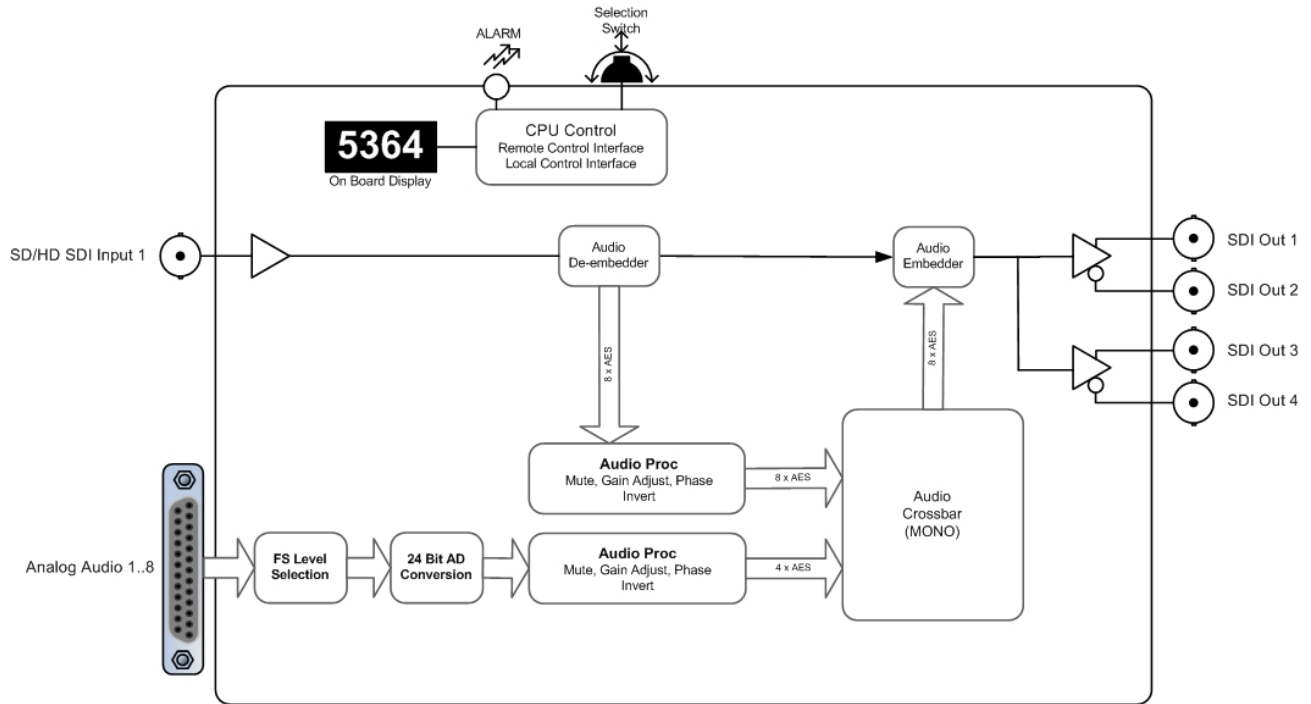
Audio Processing

The audio is fed into a full audio processing stage, which includes mono gain adjust, mute, phase inversion, silence and overload detection.

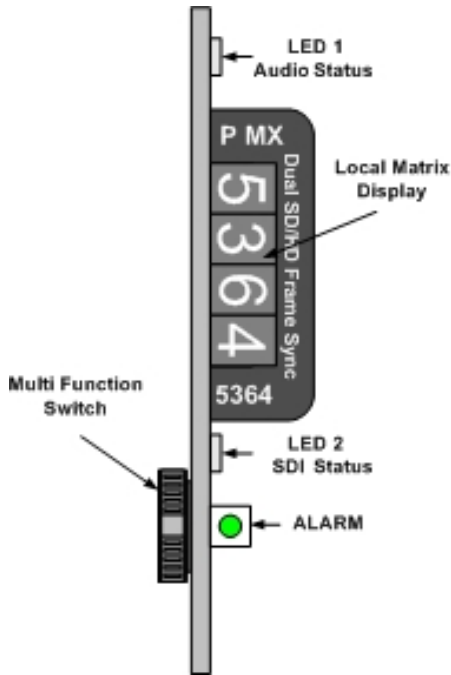
Audio Group Deletion

The embedder will detect any audio groups present in the SDI stream, and each group can be selected individually. The user has the choice of passing any existing embedded audio group(s) intact, replacing the audio group(s) or deleting the audio group(s).

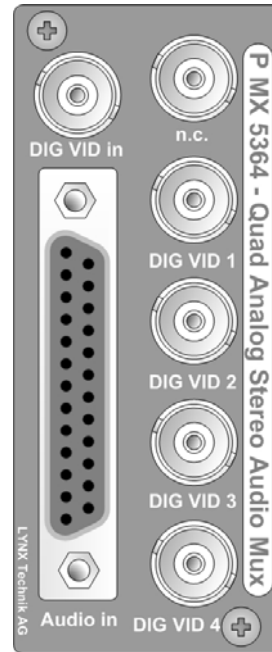
Functional Diagram (P MX 5364)



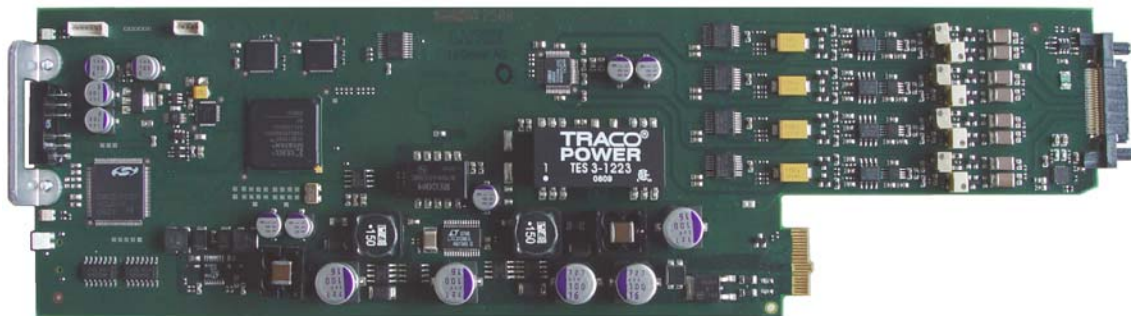
Module Layout



Module Front Panel



Module Rear Termination Panel



CardModule Layout

Connections

Video

The embedders use standard 75 Ohm BNC connectors. We recommend the use of high quality video cable for digital video connections to reduce the risk of errors due to excessive cable attenuation. Max cable lengths the module will support are shown below.

SDTV = 250m Belden 8281 (270Mbits/s)

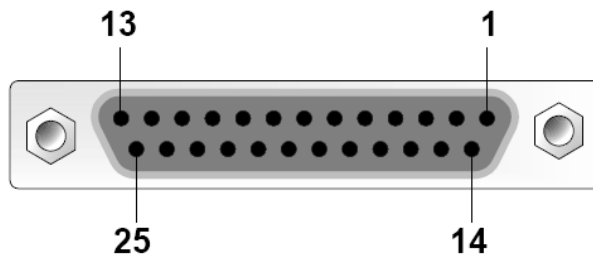
HDTV = 140m Belden 1694A (1.4Gbits/s)

Note. Due to the compact design of the connection plate it will be necessary to use a connection tool to secure the BNC video connectors.

Audio

The module provides a rear connection plate with a 25 pin female SubD connection for balanced analog audio signals. Connector wiring is shown below.

Pin Number	Connection	Pin Number	Connection
1	Audio 1L +	14	Audio 1L -
2	Audio 1L GND	15	Audio 1R +
3	Audio 1R -	16	Audio 1R GND
4	Audio 2L +	17	Audio 2L -
5	Audio 2L GND	18	Audio 2R +
6	Audio 2R -	19	Audio 2R GND
7	Audio 3L +	20	Audio 3L -
8	Audio 3L GND	21	Audio 3R +
9	Audio 3R -	22	Audio 3R GND
10	Audio 4L +	23	Audio 4L -
11	Audio 4L GND	24	Audio 4R +
12	Audio 4R -	25	Audio 4R GND
13	n.c.		



View looking INTO connector as seen on module

We recommend you use high quality screened (twisted pair) cable for the balanced audio connections. LYNX has an optional audio breakout cable which will bring out all audio connections to in line XLR connectors. Model number **R AC F25-8**

Installation

If this module was supplied as part of a system it is already installed in the rack enclosure. If the module was supplied as a field upgrade please follow the installation procedure below.



NOTE Observe static precautions when handling card. Please see ESD warnings on Page 5.

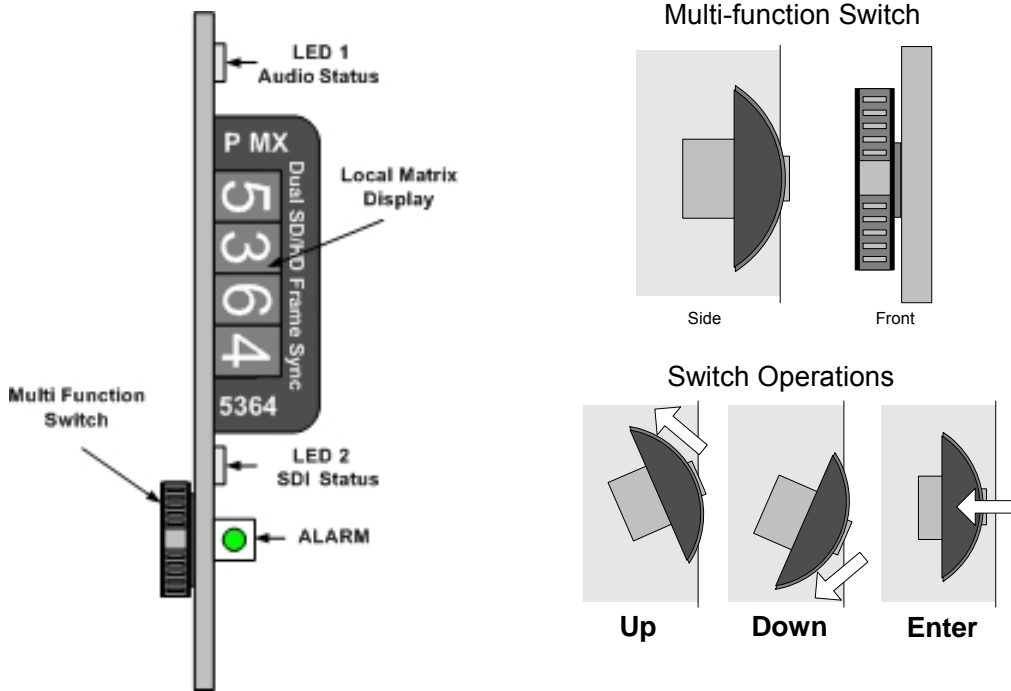
Each Card Module is supplied with a rear connection panel and two mounting screws. Please follow the following procedure for installation of the card module into the Series 5000 Card Frame.

1. Select a slot in the card frame where the CardModule will be located.
2. Remove the blank connection panel from the rear of the rack (if fitted)
3. Install the rear connection panel using the screws supplied. Do not tighten the screws fully
4. Slide the card module into the card frame and carefully check the CardModule connects to the rear connection plate. The card should fit easily and should not require excessive force to insert, if you feel any resistance, there could be something wrong with the rear connection panel location. Do not try and force the connection this may damage the connectors. Remove the rear connection panel and check alignment with the CardModule.
5. Insert and remove the CardModule a few times to ensure correct alignment and then tighten the two screws to secure the rear connection plate.

Settings and Control

The module has an integrated micro-controller, which enables the module to be configured and controlled locally using the multifunction switch and 4 character dot matrix display (or from remote using a GUI interface when using one of the optional controllers and control software).

Once set, all settings are automatically saved in non-volatile internal memory. (Flash RAM) The module will always recall the last used settings.



Multi Function Switch

The CardModule is equipped with a multi-function switch located on the front bottom edge of the card. (See above)

Using the Local Display Menus

Making local adjustments to the module is done using the multifunction switch and the integrated 4-character dot matrix display. The menu system is layered, and navigation through the system is done using the **UP** and **DOWN** functions of the switch. **ENTER** is used to move between menu levels and also enter a selection.

Switch Function	Operation
UP	Move UP within a level
DOWN	Move down within a level
ENTER	Change levels / Make selection

Menu Structure

The Menu structure is defined in the next table, and should be used when navigating through the system.

ENTER moves between levels

UP/DOWN moves between items within the level

When you enter a new setting the system will jump back one level in the menu system.

- The “back” selection in the menu structure will take you back one level when selected.
- When an item is selected which has several setting possibilities the first value displayed will be the value currently stored in the system. The order of the available settings for any menu item in the table supplied does not represent the order the settings will actually be displayed.
- If left unattended, the menu will default to the root display after a preset timeout.

Note. When the crossbar is assigned using the local control menu above it functions as an AES crossbar. The GUI crossbar as used from remote is a mono crossbar. Any left and right channel assignments made using the mono crossbar are removed when a AES channel is assigned using the local controls (left and right channels revert to as there are on the input to the crossbar)

Layer 1	Layer 2	Layer 3	Layer 4	Description
5364				Root display
	GDEL			Delete groups from SDI input
		GRP1		Group 1
			ON	Delete this group
			OFF	Pass this group
			back	
		GRP2		Group 2
			ON	Delete this group
			OFF	Pass this group
			back	
		GRP3		Group 3
			ON	Delete this group
			OFF	Pass this group
			back	
		GRP4		Group 4
			ON	Delete this group
			OFF	Pass this group
			back	
		back		

	EMBD			Embed groups into SDI output
		GRP1		Group 1
			ON	Embed this group
			OFF	Pass this group
			back	
		GRP2		Group 2
			ON	Embed this group
			OFF	Pass this group
			back	
		GRP3		Group 3
			ON	Embed this group
			OFF	Pass this group
			back	
		GRP4		Group 4
			ON	Embed this group
			OFF	Pass this group
			back	
		back		
	XBAR			Configure audio crossbar
		1.12		Output group 1, channels 1+2
			1d12	Assign input group 1, channels 1+2
			1d34	Assign input group 1, channels 3+4
			2d12	Assign input group 2, channels 1+2
			2d34	Assign input group 2, channels 3+4
			3d12	Assign input group 3, channels 1+2
			3d34	Assign input group 3, channels 3+4
			4d12	Assign input group 4, channels 1+2
			4d34	Assign input group 4, channels 3+4
			A.12	Assign analog audio channels 1+2
			A.34	Assign analog audio channels 3+4
			A.56	Assign analog audio channels 5+6
			A.78	Assign analog audio channels 7+8
			back	
		1.34		Output group 1, channels 3+4
			...	
		2.12		Output group 2, channels 1+2
			...	
		2.34		Output group 2, channels 3+4
			...	
		3.12		Output group 3, channels 1+2
			...	

		3.34		Output group 3, channels 3+4
			...	
		4.12		Output group 4, channels 1+2
			...	
		4.34		Output group 4, channels 3+4
			...	
		back		
	TEST			Configure test signal
		STD		Select SDI standard for test signal
			LAST	Follow last SDI input standard
			525	
			625	
			60Hz.720p	
			59Hz.720p	
			50Hz.720p	
			30Hz.720p	
			29Hz.720p	
			25Hz.720p	
			24Hz.720p	
			23Hz.720p	
			60Hz.1080i	
			59Hz.1080i	
			50Hz.1080i	
			30Hz.1080p	
			29Hz.1080p	
			25Hz.1080p	
			24Hz.1080p	
			23Hz.1080p	
			25Hz.1080psF	
			24Hz.1080psF	
			23Hz.1080psF	
			back	
		AUTO		Auto Black Signal
			ON	Enable automatic test signal
			OFF	Disable automatic test signal
			back	
		back		
	RSET			Restore factory defaults
		NO		Cancel
		YES		Confirm
	back			

LED Status Indicators

The P MX 5364 has LED indicators on the edge of the card that serve as alarm and status indication for the module. Function is described below.

AES Status LED 1

LED Color	Indication
Green	All AES for embedding is present and OK (only activated audio groups are monitored)
Yellow	AES for embedding missing
Red	All AES for embedding is missing (only activated audio groups are monitored)

SDI Status LED 2

LED Color	Indication
Green	SDI Present and Locked
Red	SDI not present / invalid SDI input

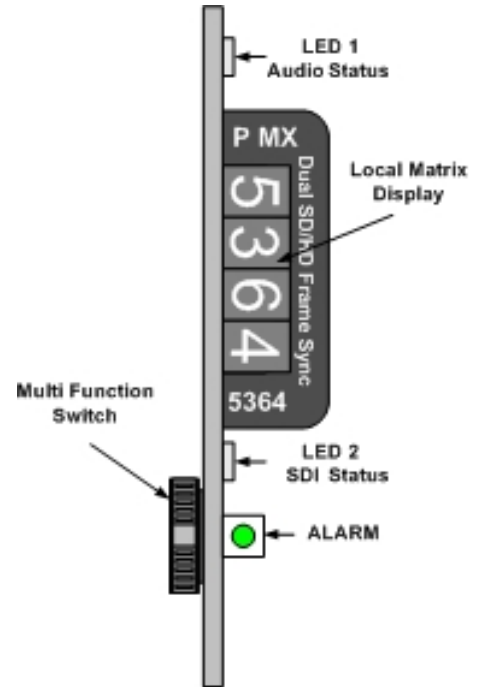
Alarm LED 3

LED Color	Indication
Green	SDI and AES OK
Yellow **	One or more AES signals for embedding missing (only activated audio groups are monitored)
Red	SDI input missing or invalid

**** Note**

The Alarm LED will occasionally flash yellow during normal operation (black then a quad yellow flash). This is indicating the module is updating the stored settings in flash ram and is normal. No error condition exists and this function does not effect normal module operation.

Using the "Locate" function from the module GUI in the control system can also cause the Alarm LED to flash yellow (black then a triple yellow flash) this is used as a tool to physically locate a module in a system and does not indicate a fault condition.

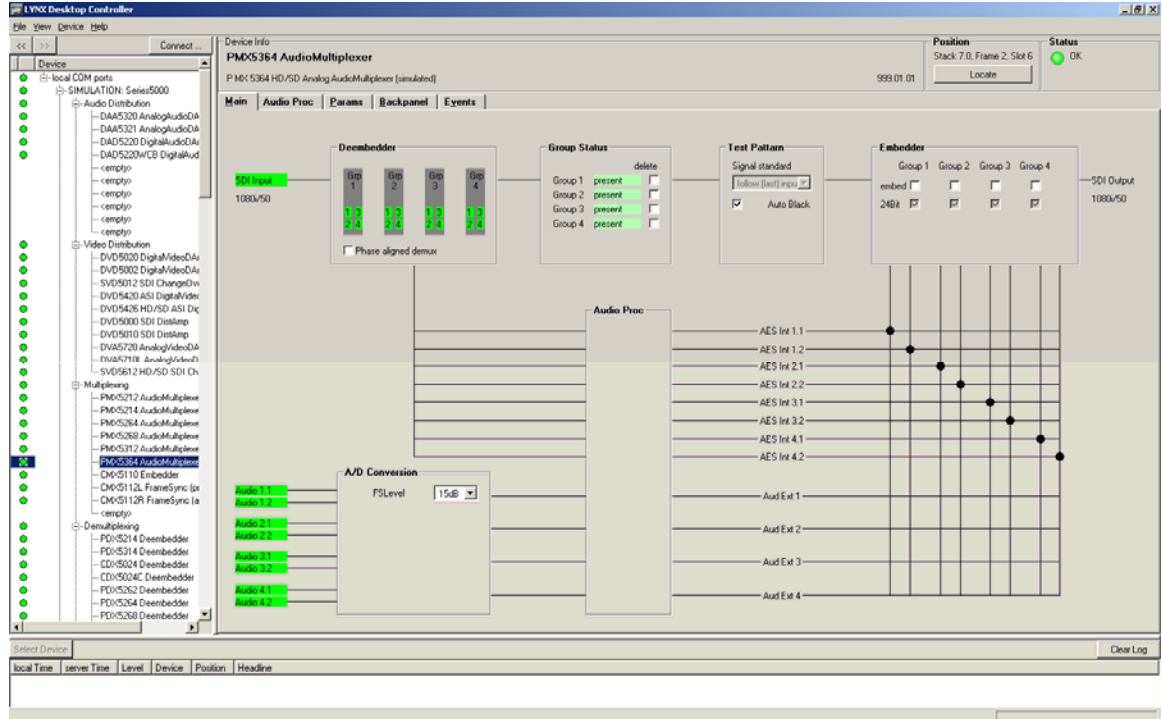


Control System GUI

All LYNX CardModules support a computer interface which allows setting the modules parameters using a simple GUI interface. Access to all standard features (and in some cases) extended features is possible using this interface.

Access to the GUI requires the use of the optional LYNX control system

Note. Any settings made using the control system overrides any local settings made on the module. All settings are stored in internal flash ram and will survive power cycles and long term storage.



The above screenshot shows the complete module GUI. The Device info area contains information about the module including name and firmware revision. If used as part of a larger system (using the LYNX central control system) the modules position and physical location is displayed above the “locate” button.

Note. The Locate function is a tool used to quickly identify a module in larger systems. Selecting “locate” will flash the module alarm LED yellow. (does not effect module operation)

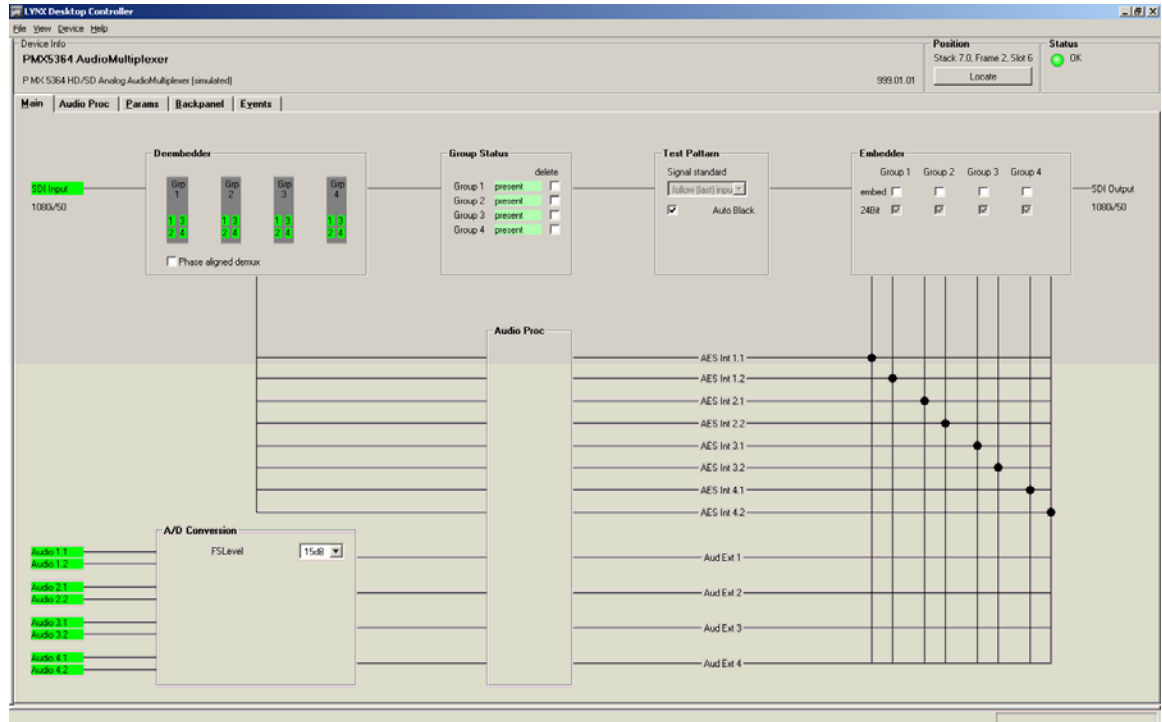
The first screen you see when the module is selected is the **Main** tab this is a graphical representation of the module’s function and signal flow (left to right). Clicking on processing boxes where shown will link to other GUI screens with controls for these specific functions.

The area at the bottom of the screen is the error log. Any fault condition will be time stamped and entered into the log.

There are a number of Tabs associated with each Module which splits up the modules settings into a number of separate screens. The primary GUI screens and functions are described below.

Main Tab

This screen is the main GUI interface and is presented first when the module is displayed in the GUI. The layout replicates module function and the signal flow if from left to right. Selections are made using onscreen sliders, radio buttons, drop down selections and checkboxes.



Input Detection

On the left the SDI input is detected and the standard / format displayed on screen in green (if format is not supported color = Yellow and if input is missing the color = Red)

Group Status

Any embedded audio is detected and the status is displayed in the Group Status area. If embedded audio is present it will highlight green. Its possible to delete each incoming audio group individually at this stage using the delete checkbox.

Note. *If the audio is not deleted but the group is selected for embedding then the existing audio will be over written.*

Test Pattern Signal Standard

This selection is grayed out when a valid input signal is detected. When there is no input (or a invalid input signal) then the selection made in this drop down box will determine the output standard of the “Black” audio sync frame for the embedder.

Default is “follow last input” which is recommended for most applications. If the video input is removed then the embedder will continue to function (with a minimal interruption to the audio embedding process) by outputting embedded audio in a black “audio sync” frame.

With no input selected its possible to preset the output format by making a selection from the drop down selections. Selections provided:

- Follow “last” input (default)
- 525
- 625
- 720p 50Hz
- 720p 60Hz
- 720p 59.94Hz
- 720p 23.98Hz
- 720p 24Hz
- 720p 25Hz
- 720p 29.97Hz
- 720p 30Hz
- 1080i 50Hz
- 1080i 60Hz
- 1080i 59.94Hz
- 1080p 23.98Hz
- 1080p 24Hz
- 1080p 25Hz
- 1080p 29.97Hz
- 1080p 30Hz
- 1080psf 23.98Hz
- 1080psf 24Hz
- 1080psf 25Hz

Audio AD Conversion

The eight analog audio channels are converted with 24Bit accuracy. The Full Scale level can be set as 12dBu, 15dBu, 18dBu, 22dBu or 24dBu.

Audio Crossbar

Each internal AES signal passes into a mono crossbar where each individual left and right channel is split from the AES inputs and made available for mapping into any of the available crossbar outputs.

Embedder

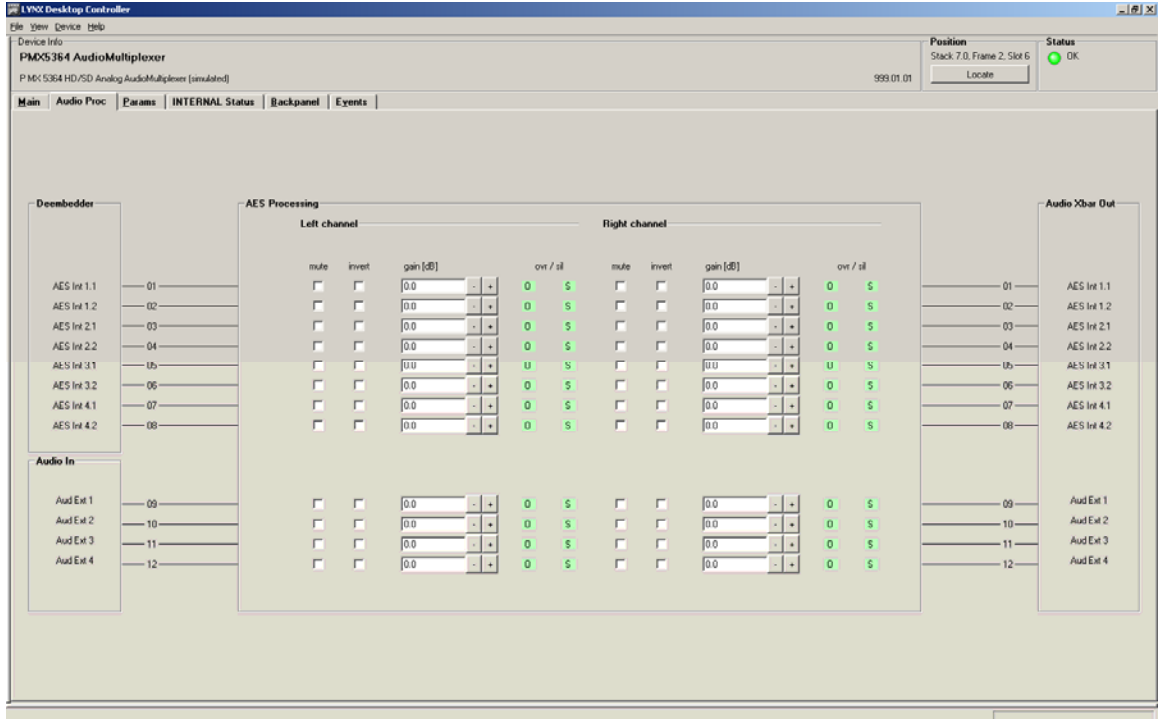
The crossbar provides 8 AES outputs combined into 4 AES groups which can be embedded into the SDI input stream. Group selection is possible using the group select checkbox.

Note. *If an existing embedded group has not been deleted but is selected for embedding then the existing audio will be overwritten*

If an HDTV input signal is detected then only signals with 24 Bit audio will be embedded. If an SDTV signal is detected then you can select in between 20 and 24 Bit embedding.

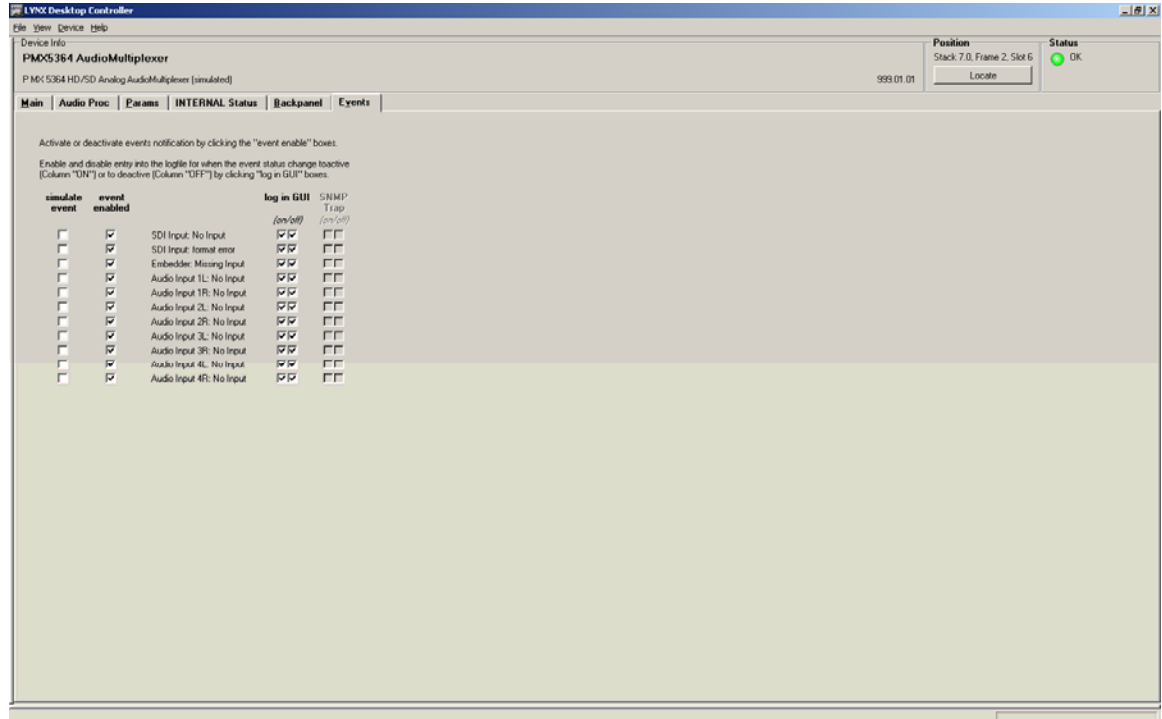
Audio Processing Tab (Audio Proc)

This provides access to the internal audio processing functions such as audio gain / mute / phase invert / overload and silence detection per audio mono channel (overload and silence are indicated by color of the respective symbol: Green = OK Red = overload or silence).



Events Tab

The Events Tab is where the module alarming and error notifications are configured for the module.



The GUI has an integrated error log, which is a simple text log file stored in the controller PC. This will record an event and timestamp it. The log can be seen at the bottom of the GUI screen and can be scrolled through using the scrolling bar.

Log in GUI Function

Events are selectable, you can choose if you want to record a particular event in the log (or not) or configure it to only record one side of the event. (For example you might want to log when a SDI input was removed but do not want to log when it came back). The ON/OFF trigger can be configured for each of the available events shown in the list and is setup using the checkboxes provided.

Event Enabled

By default all alarm conditions are activated (checked), by de-selecting a specific alarm condition in this column you are telling the module to ignore this condition completely. It will not color the alarm LED, log and event in the GUI or send a SNMP trap. This is useful if for example you never have anything connected to AES input 4 and want the card to ignore this input condition completely then you would simply de-select "AES 4 Input: No input" and it will be ignored.

SNMP Support

If the system is using a RCT 5030 Master Controller and the SNMP option is installed then the "SNMP Trap" columns become available.

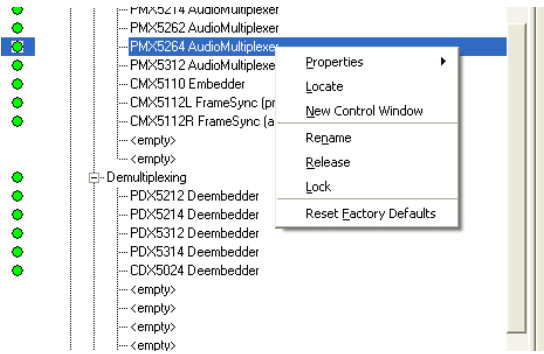
Here you can configure for which events you would like to transmit a "SNMP trap" over the network. (This has no impact or influence over the internal error log maintained by the LYNX control system)

(Internal LYNX error logging and external SNMP traps can be configured independently).

Common GUI Controls

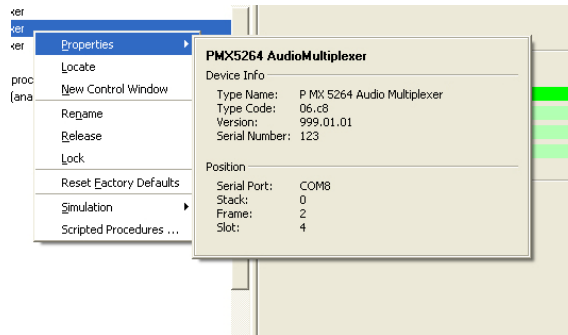
There are a number of GUI controls and commands which are common for all modules in the control system. These are explained below.

Right click on any module in the tree will bring up a sub-menu of available commands (see below). **Note.** This menu can also be selected using the GUI drop down menus by clicking on **“Device”**



Properties

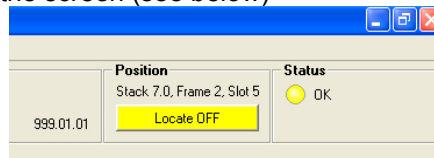
This will bring up a dialog which shows device specific properties about the module selected. (**Note.** this is just an example and the module type and data shown is not indicative of the module specified in this manual)



Locate

This feature is useful if you need to physically locate a module in a larger system quickly (for removal or maintenance purposes) When Locate selected this will flash the module alarm LED yellow. This function does not impact normal module operation and will timeout after a short time period.

This feature can also be invoked from the main GUI screen using the “locate“ button in the top right hand side of the screen (see below)

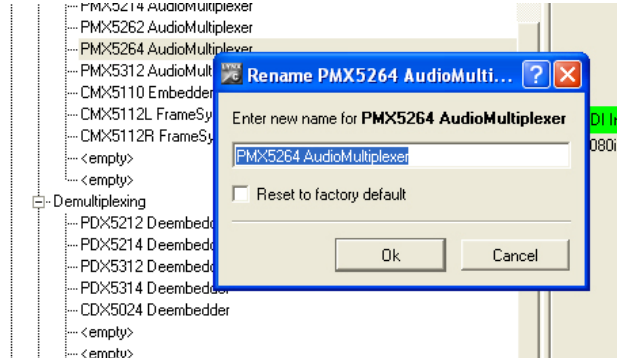


New Control Window

Selecting this will open up a new control window with selected the module GUI contained within. This window can be minimized to the taskbar for fast access and is useful if this GUI is something you will need to refer to often.

Rename

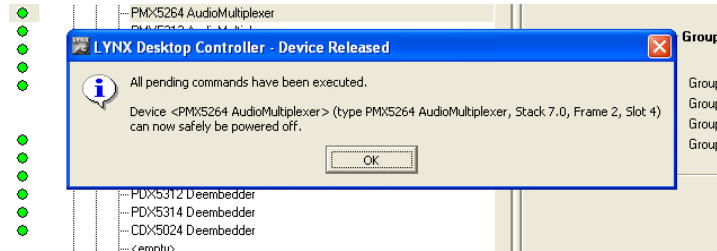
It is possible to rename everything in the control system selection tree, this includes all rack names and the individual module names. The descriptions supplied are default descriptions the system applies. To rename a device simply select the device in the tree, right click and then select “rename” the dialog below will be displayed



Simply type in the name you wish to assign to this device and press OK. If you wish to restore the default name simply select “Reset to Factory Default” and press OK

Release

During normal operation if there is no activity on the module GUI for approx ten seconds then any changed settings are automatically written to flash ram in the module. You can store the settings immediately by using the release command. When the settings have been stored you will see the confirmation dialog below.



It is recommended you use the release function before removing any module from the rack to ensure the latest settings have been stored prior to module removal (if a module is removed before the normal 10 second timeout then the settings will not be stored)

Lock

Selecting this will lock the device to prevent any accidental changes being made to the modules settings. The module status can be seen but all the controls will be grayed out. To unlock simply deselect the lock control from the menu.

Reset Factory Defaults

If you are unsure of the settings, or have managed to set the module into a strange mode of operation and wish to recover the factory defaults then this can be done by selecting reset factory defaults. You will be asked to confirm this operation with the dialog below



Specifications

Video Input	
Signal Type	Serial Digital Video (SDI) SMPTE 292M, 344M, 259M with automatic input standard and format detection
Supported Formats	SDTV : 525 / 59.94Hz and 625 / 50Hz HDTV : 720p / 50Hz, 720p / 60Hz, 720p / 59.94Hz, 720p / 23.98Hz, 720p / 24Hz, 720p / 25Hz, 720p / 29.97Hz, 720p / 30Hz, 1080i / 50Hz, 1080i / 60Hz, 1080i / 59.94Hz, 1080p / 23.98Hz, 1080p 24Hz; 1080p / 25Hz, 1080p / 29.97Hz, 1080p / 30Hz, 1080psf / 23.98Hz, 1080psf / 24Hz, 1080psf / 25Hz
Input Impedance	75 Ω BNC
Input Level	0.8V
Return Loss	>15dB (270Mbits); >10dB (1.485Gbits)
Digital Video Outputs	
Signal	4 x Serial Digital Video (SDI) SMPTE 292M, 344M, 259M
Output Impedance	75 Ω
Output Level	0.8V pp +/- 10%
Return Loss	> 15dB (1.5 Ghz)
Connection	BNC
Jitter	<0.20 UI (270 Mbits); <0.25 UI (1.485Gbits)
Audio Inputs	
Signal	4 x balanced analog stereo inputs
Connection	25 pin Sub D
Impedance	20KOhm
Sampling	48kHz
Quantization	24 bit
Noise floor	< -90dB (A-weighted)
Distortion	< 0.002% @ 20Hz to 20kHz
Frequency response	0.1dB @ 20Hz to 20kHz
0 dB FS level	+ 12, 15, 18, 22, 24 dBu selectable
Electrical	
Operating Voltage	+ 12 VDC
Power Consumption	7 W
Safety	IEC 950 / EN 60950 / VDE 0805
Mechanical	
Size	283mm x 78mm
Weight	CardModule 120g, connector plate 70g
Ambient	
Temperature	5°C – 40°C Maintaining Specifications
Humidity	90% non condensing

Service

Parts List

Due to the very dense design and high level of integration there the module is not user serviceable. Please contact LYNX for repairs or to request an exchange unit.

Technical Support

If you are experiencing problems, or have questions please contact your local distributor for further assistance.

Technical support is also available from our website.

Please do not return products to LYNX without an RMA. Contact your authorized dealer or reseller for more details on our return process.

More detailed product information and product updates may be available on our web site:

www.lynx-technik.com

Contact Information

Please contact your local distributor; this is your local and fastest method for obtaining support and sales information.

LYNX Technik can be contacted directly using the information below.

Address LYNX Technik AG
 Brunnenweg 3
 D-64331 Weiterstadt
 Germany.

Website www.lynx-technik.com

E-Mail info@lynx-technik.com

LYNX Technik manufactures a complete range of high quality modular products for broadcast and Professional markets, please contact your local representative or visit our web site for more product information.